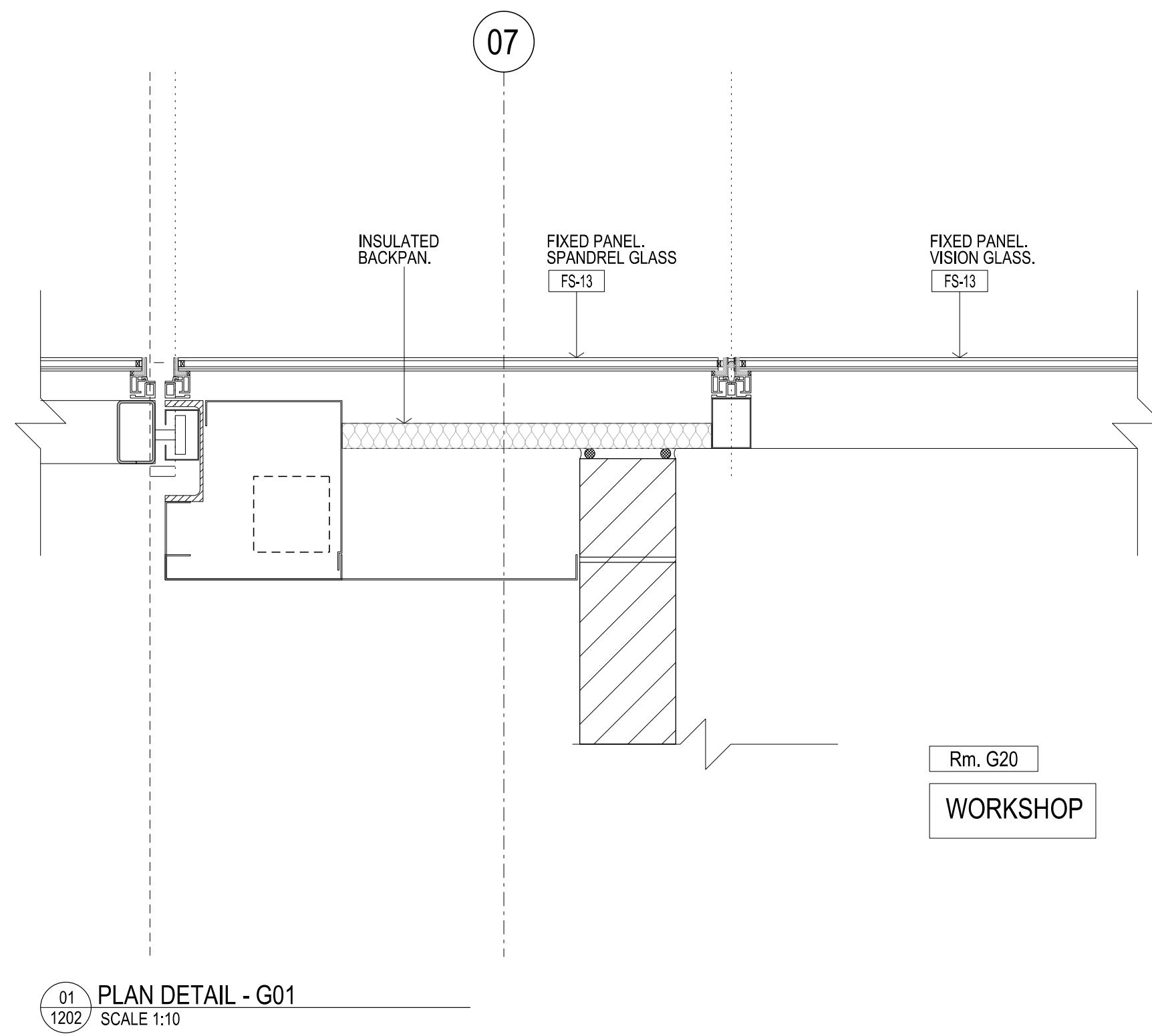


CONTRACTORS SHALL VERIFY JOB DIMENSIONS BEFORE ANY JOB COMMENCES. ALL SHOP DRAWINGS SHALL BE SUBMITTED TO THE SUPERINTENDENT AND MANUFACTURER SHALL NOT COMMENCE FROM THE RESULTS OF DIMENSIONS SHOWN DRAWINGS ISSUED BY THE CONSULTANT. FIGURED DIMENSIONS SHALL TAKE PRECEDENCE OVER SCALED. THIS DRAWING SHALL BE READ IN CONJUNCTION WITH ALL RELEVANT CONTRACT SPECIFICATIONS AND DRAWINGS COPYRIGHT OF THIS DRAWING IS VESTED IN HANDLE.

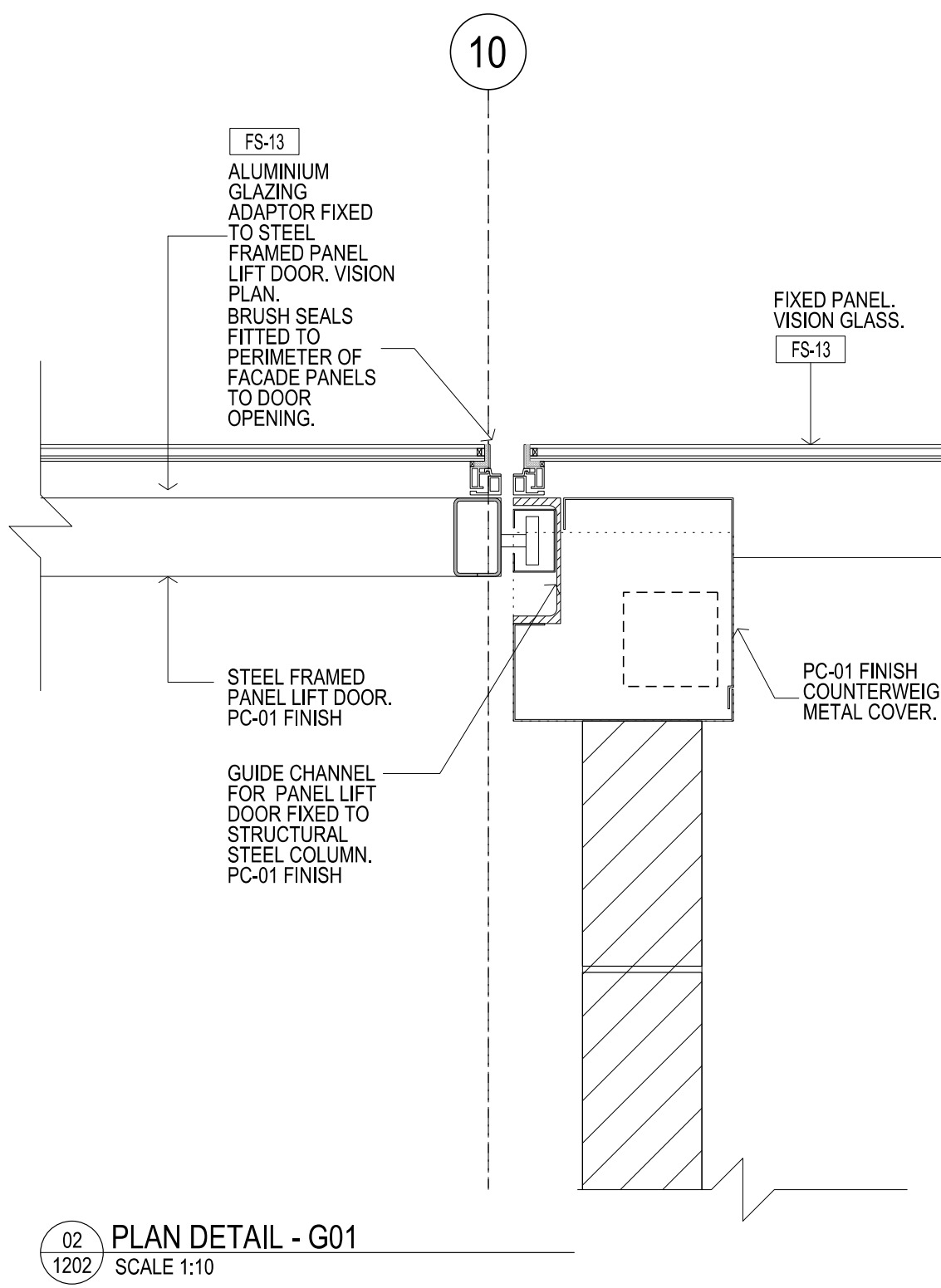
General Notes

REFER ARCHITECTURAL DRAWINGS:

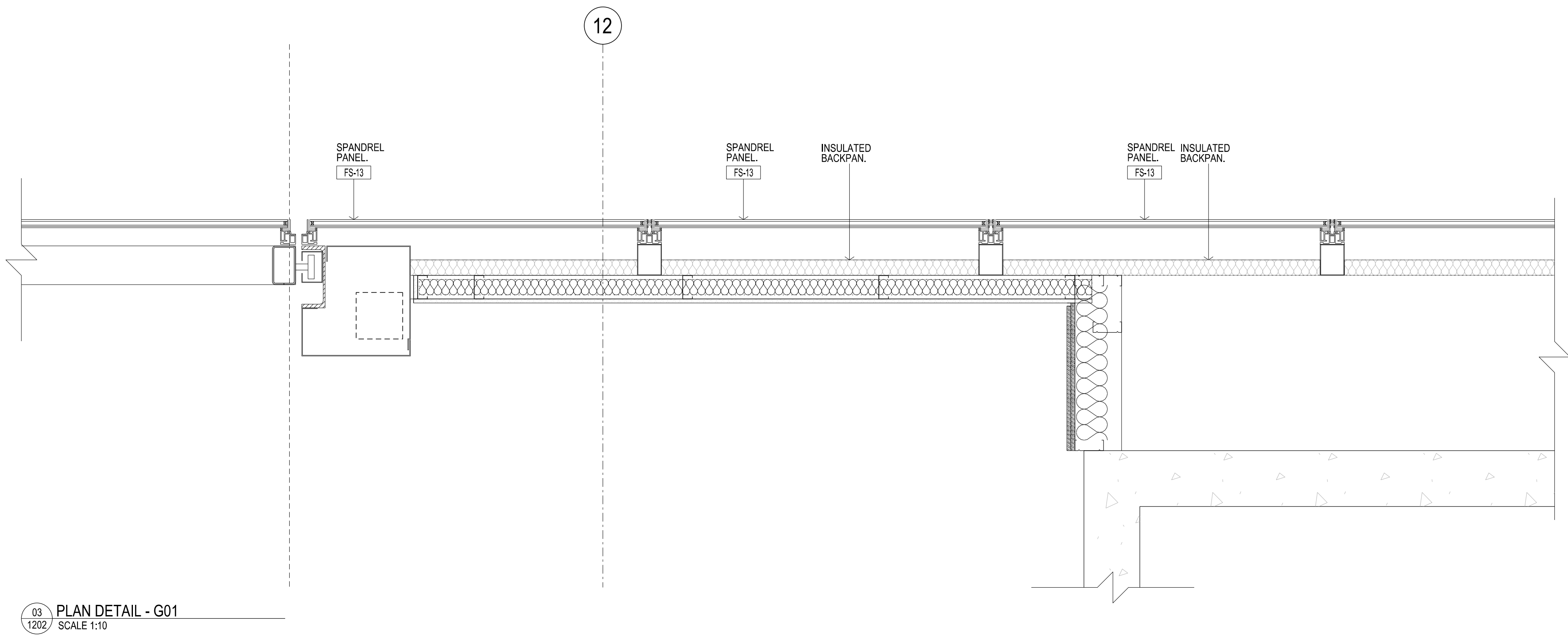
- FACADE SETOUT AR1502-AR1507
- PRECAST SETOUT AR1512-AR1517
- SCREEN SETOUT AR1502-AR1557
- SCREEN DETAILS AR6550-AR6554



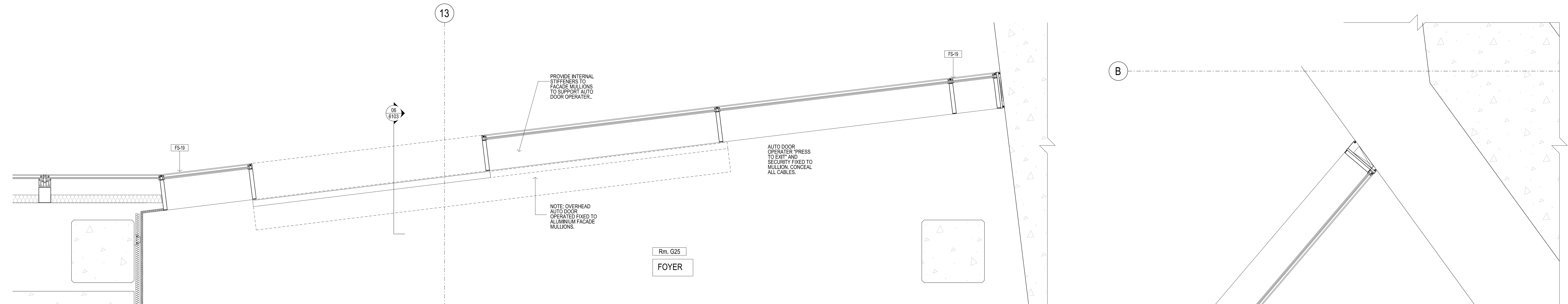
07 PLAN DETAIL - G01  
1202 SCALE 1:10



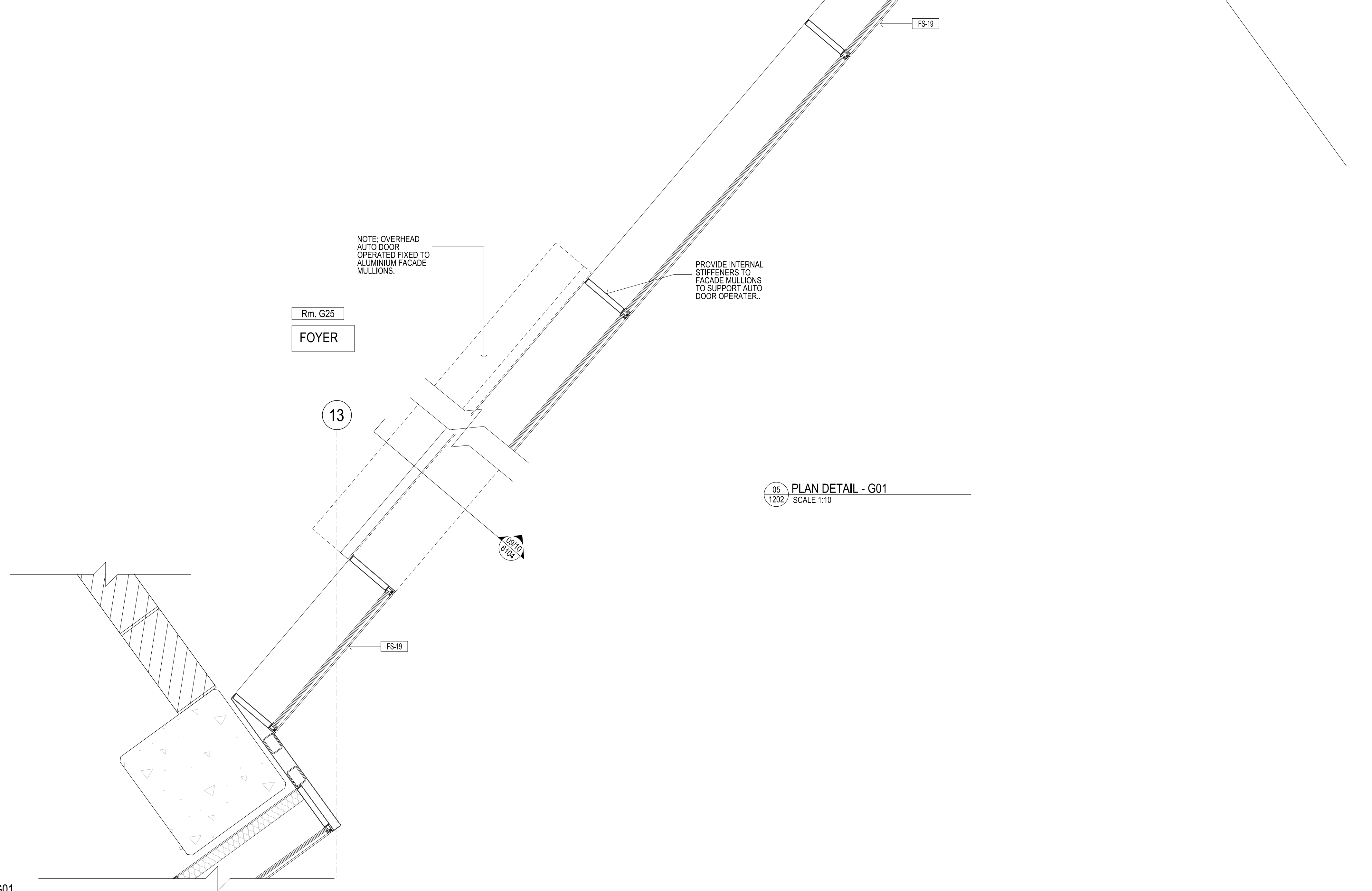
10 PLAN DETAIL - G01  
1202 SCALE 1:10



12 PLAN DETAIL - G01  
1202 SCALE 1:10



13 PLAN DETAIL - G01  
1202 SCALE 1:10



06 PLAN DETAIL - G01  
1202 SCALE 1:10

Rev	Issue	Revision Description	Amd	Date
A	SG	PLASTERBOARD PACKAGE	-	18.09.13
05	SG	TENDER ISSUE	-	12.04.13
04	SG	100% CD - TENDER ISSUE	-	07.09.12
03	SG	90% CD ISSUE	-	10.08.12
02	SG	75% CD ISSUE	-	13.07.12
01	SG	55% CD ISSUE	-	08.06.12



**NADAAA**  
 NADAAA  
 1520 Washington Street No.2 Boston Massachusetts 02118 USA  
 Telephone +1 617 442 8232  
 Facsimile +1 688 442 1417  
 Email nad@nadaaa.com

**John Wardle Architects**  
 25 Rokeby Street, Collingwood, Victoria 3066 Australia  
 Tel: +61 3 8662 0400 www.johnwardlearchitects.com  
 © 2012 John Wardle Architects ABN 83 006 814 268

Client **University of Melbourne Parkville Campus**

Project **Faculty of Architecture Building and Planning**

Title **PLAN DETAILS G01 - SHEET 3**

Project No.	<b>0913</b>	Scale	1:10 @ A0 1:20 @ A2
Drawing No.	<b>AR6002</b>	Revision	<b>A</b>

Date: Dec 2011 Dwn - Co-Ord - Chk -

FILENAME - \$FILES  
**FOR CONSTRUCTION**